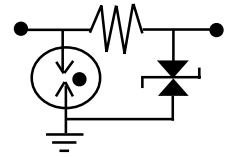


# DLP-36B



Protects Modems, Fax's, Telco's, CSU/DSU

The DLP-36B and associated DLM modules offer high speed heavy duty protection for PABX systems, key systems, port selectors and any instrumentation system using telephone lines, RS-232, 423 and 20mA loops.

Employing 50-pin RJ21X connectors, the DLP-36B rapidly diverts incoming transients to ground before they can upset or damage downstream equipment. Protection circuitry resets automatically after the transient has passed.

DLP-36B is a basic NEMA-12 unit that accepts up to 25 DLM plug-in protection modules, protecting 50 wires.

Each plug-in DLM module protects two wires and is available at 6V, 25V, 62V and 200V levels. The DLM protection modules can be mixed to suit your specific suppression needs. System installs in under 30 minutes to offer safe, fast protection for sensitive equipment.



## DLP-36B Assembly

Duty Heavy  
Connectors RJ21X M/F  
Protects Up to 50 Wires  
Enclosures NEMA-12  
Mounting 9.75" x 6.0" (.31 ID)

## DLM Module

I Peak 5000 Amps  
Clamp Voltages 6, 25, 62, 200V  
Response Time <1 nanosecond  
Attenuation <1db at 10MHz  
Series Rs 2.4 Ohms  
UL 497A (Fuse), 497B

## Clamp Voltage

6V for RS-422, 423, 485  
25V for RS-232  
62V for CSU/DSU  
200V for Dial-up lines

## Protection Application

T1, E1, CSU/DSU  
Key Phone Systems  
Port Selectors

## Ordering Information

DLP-36B and DLM - 62V 2  
Basic Protection Module Clamp Series  
Enclosure 2 Circuits/Module Threshold Resistance  
Unit 25 Modules (Max.)

Note: Use Suffix F for Fusing.