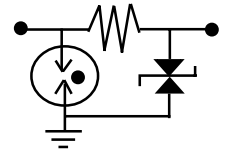


DLP-37A

Instrumentation Protection

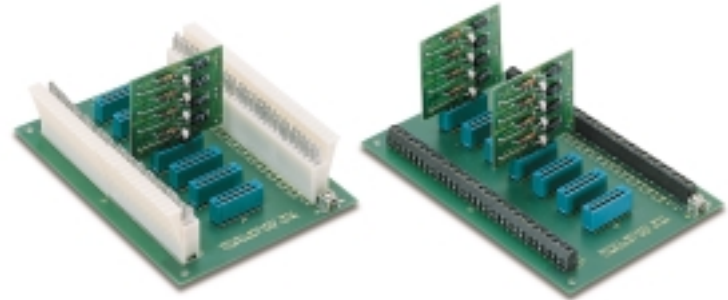


The DLP-37A/DLM4 protects computer mainframes, terminals, process controllers, data loggers and other complex instrumentation from damaging lightning and surges.

Screw terminal strip and/or punchdown connections enable wide application for the heavy duty DLP-37A system. Protection circuitry resets automatically after the transient has passed.

The DLP-37A is a protection platform that accepts up to seven DLM4 plug-in protection modules. Each plug-in DLM4 module protects four wires and is available at 6, 15, 25, 62 and 200V levels. The DLM4 protection modules can be mixed to suit your specific protection needs.

The protectors are UL497A, UL497B Listed. Let our Technical Support Group help you with any questions about your application.



DLP-37A1
Punchdown Block Terminals

DLP-37A
Screw Terminals



DLP-37A Assembly

Capability	Accepts 7 DLM4 modules
Protects	Up to 28 Wires
Service	Heavy Duty (GT + SAD)
Connectors	Screw terminals or Punchdown Blocks
Assembly Mounting	PC Board 6.50" x 4.20" (0.19")

DLM4 Module

I Peak	5000 Amps
Clamp Voltages	6, 15, 25, 62, 200V
Response Time	<1 nanosecond
Attenuation	<1db at 10MHz
Series Rs	2.4 Ohms
UL	497A (Fuse), 497B

Part Number* Clamp V

DLM4-6V2	6V for RS-422, 423, 485
DLM4-15V2	15V
DLM4-25V2	25V for RS-232
DLM4-62V2	CSU/DSU
DLM4-200V2	200V for Dial-up lines

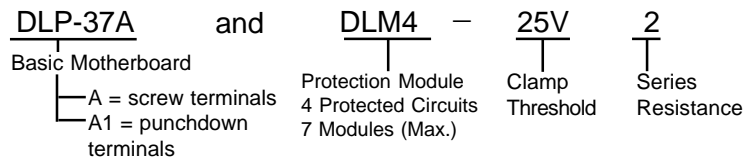
* DLM4 = 4 Protected Circuits

Note: Specify number of DLM4 modules required.

Protection Application

Process Controller
Data Logger
Mainframes

Ordering Information



Note: Specify number of DLM4 modules required.