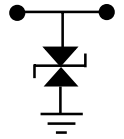


# PLC-15A

## Programmable Logic Controller Protection



A fast-rising transient on AC or data lines can upset systems logic - requiring a costly shutdown to reset equipment. Replacing damaged controllers can sideline your operation indefinitely.

MCG's PLC-15A installed at the controller answers the need for compact, dependable protection in a hostile factory environment.

The PLC-15A installs easily in minutes and eliminates factory noise and transients appearing on the AC and data lines that feed the controller. LED's monitor the power and data lines to assure proper operation.



### General Specifications

Response Time	<1 nanosecond
Status Indicators	Green LED's
Connection	Solderless Screw Terminals
Temperature	-40° to +55°C
Enclosure	High Impact Plastic
Mounting	4.2" x 3.75" (.185" ID - 4x)
Shipping Weight	<1 lb.

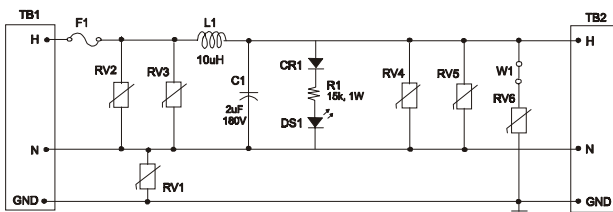
### AC Power Line Specifications

Rated Voltage (50/60/400Hz)	120VAC
Rated Current (RMS) at 40°C	15A
Surge Current (Maximum)	10kA (8/20µs)
Clamp Voltage (Typical)	392V (3kA, 8/20µs)
Surge Energy	480j (10/1000µs)
Filter Attenuation	-20db 30kHz -70db 1.4MHz
AC Indicator	Green LED
UL Recognised Component	

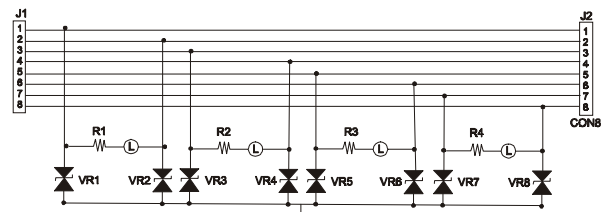
### Data Line Specifications

Response Time	<1 nanosecond
Available Clamp Voltages	+/- 6V +/- 25V +/- 60V +/- 200V
Data Rate	>1 Megabit/Second
Protects	4 Data Pairs
Data Present Indicator	LED/Pair
UL	497B

AC Protection Schematic



Data Line Protection Schematic



## Protection Application

- **Rugged Protection** for both AC power lines and data lines in one convenient unit.
- **Compact Size** - Space efficient and easy to install, the PLC-15A offers quick, hardwired installation in locations where space is limited.
- **Sine Tracking** offers superior noise attenuation on the AC power line.
- **Fast Clamp Response** - In less than one nanosecond, transients are intercepted and safely diverted to ground.

## Ordering Information

PLC-15A - 25V	
Basic Model Number	Clamp Voltage
120VAC, 15A	

MCG Surge Protection

12 Burt Drive, Deer Park, N.Y. 11729, U.S.A. ♦ Phone (516) 586-5125 ♦ Fax (516) 586-5120 ♦ Note: New (631) Area Code begins 11/1/99 ♦ E-Mail: Mcginfo@mcgsurge.com

1-800-851-1508  
<http://www.mcgsurge.com>