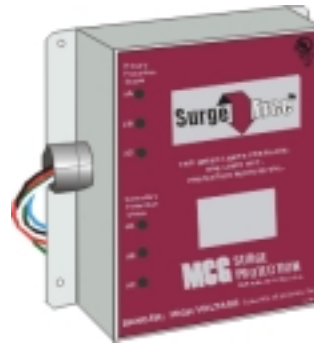


Surge Free™

SF120 & SF160



Installation Instructions

1. Confirm Model with Power Service.

Measure \emptyset -N, \emptyset - \emptyset , with voltmeter to confirm application voltage prior to installation.

Model	Power Service	Description	Wiring Diagram
SF120-120T	120/240 VAC	1 ph, 3w + gnd	1
SF120-120Y	120/208 VAC	3 ph, 4w + gnd, Wye	2
SF120-220Y	220/380 VAC	3 ph, 4w + gnd, Wye	2
SF120-240Y	240/415 VAC	3 ph, 4w + gnd, Wye	2
SF120-240DCT	240/120/120 VAC	3 ph, 4w + gnd, High-leg Delta	3
SF120-277Y	277/480 VAC	3 ph, 4w + gnd, Wye	2
SF120-240D	240 VAC	3 ph, 3w + gnd, Delta	4
SF120-480D	480 VAC	3 ph, 3w + gnd, Delta	4
SF160-120T	120/240 VAC	1 ph, 3w + gnd	1
SF160-120Y	120/208 VAC	3 ph, 4w + gnd, Wye	2
SF160-220Y	220/380 VAC	3 ph, 4w + gnd, Wye	2
SF160-240Y	240/415 VAC	3 ph, 4w + gnd, Wye	2
SF160-240DCT	240/120/120 VAC	3 ph, 4w + gnd, High-leg Delta	3
SF160-277Y	277/480 VAC	3 ph, 4w + gnd, Wye	2
SF160-240D	240 VAC	3 ph, 3w + gnd, Delta	4
SF160-480D	480 VAC	3 ph, 3w + gnd, Delta	4

2. Disconnect Power before Installation.

All wiring to be done in accordance with National Electric Code and local codes by qualified electricians.

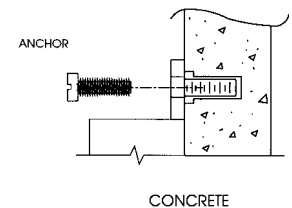
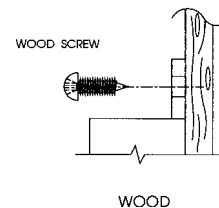
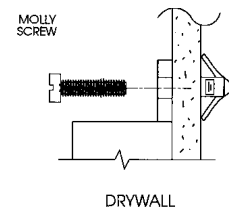
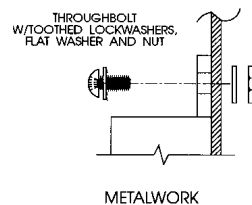
3. Mounting.

For best performance, mount protector as close to service panel as possible. Secure unit to mounting surface. Use proper fasteners as indicated. (Fasteners not supplied.)

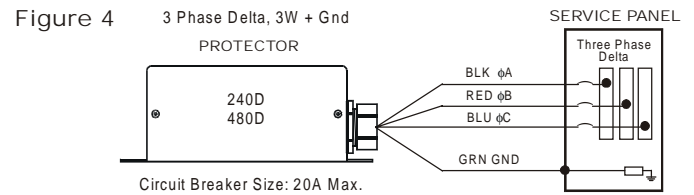
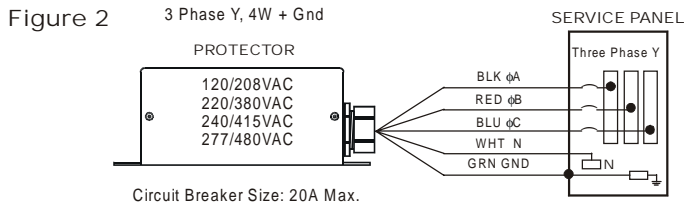
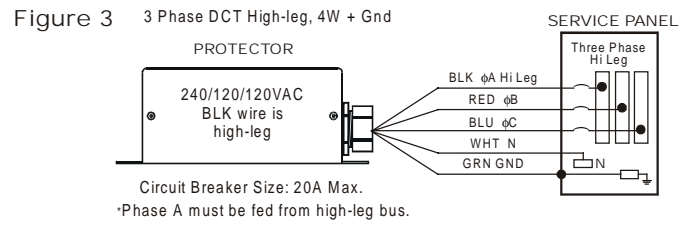
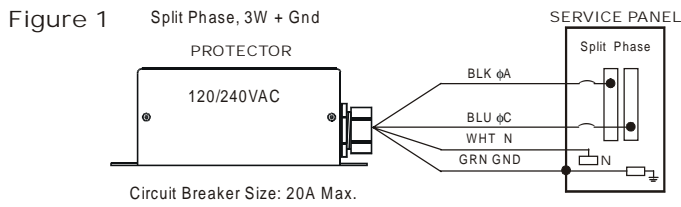
4. Wiring.

Surge protector is factory supplied with power cable installed. Cut back power cable as short as possible for best performance.

Electrician Note: connect cable to service panel as shown. Refer to wiring diagrams 1-4.



4A. Wiring Diagrams.



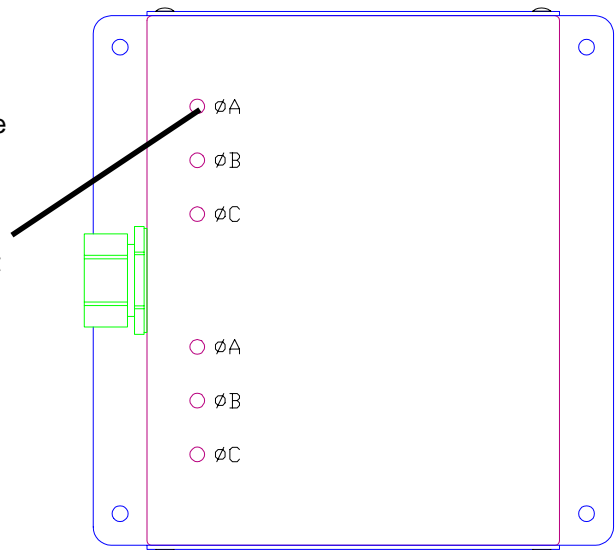
5. Diagnostics & Troubleshooting

Green LED ON Protection Present
 Green LED OFF Protection Reduced - Replace
 Protector

When a green "protection present" light is extinguished:

Green On=
 Protection Present

- Do NOT open or remove power cover. There are NO field serviceable parts inside.
- Contact factory for repair or replacement at 1-800-851-1508.



Mounting Specifications

For any questions or comments regarding installation of this or any of our protectors,

Please call us at:
 1-800-851-1508

Fax us at:
 516-586-5120

Or write us at:
 MCG Electronics, Inc.
 12 Burt Drive
 Deer Park, New York 11729

