

## Installation Instructions

### 1. Confirm Model with Power Service.

Measure  $\emptyset$ -N,  $\emptyset$ - $\emptyset$ , with voltmeter to confirm application voltage prior to installation.

Model	Power Service	Description	Wiring Diagram
SF40-120T	120/240 VAC	1 ph, 3w + gnd	1
SF40-120Y	120/208 VAC	3 ph, 4w + gnd, Wye	2
SF40-220Y	220/380 VAC	3 ph, 4w + gnd, Wye	2
SF40-240Y	240/415 VAC	3 ph, 4w + gnd, Wye	2
SF40-240DCT	240/120/120 VAC	3 ph, 4w + gnd, High-leg Delta	3
SF40-277Y	277/480 VAC	3 ph, 4w + gnd, Wye	2
SF40-240D	240 VAC	3 ph, 3w + gnd, Delta	4
SF40-480D	480 VAC	3 ph, 3w + gnd, Delta	4
SF80-120T	120/240 VAC	1 ph, 3w + gnd	1
SF80-120Y	120/208 VAC	3 ph, 4w + gnd, Wye	2
SF80-220Y	220/380 VAC	3 ph, 4w + gnd, Wye	2
SF80-240Y	240/415 VAC	3 ph, 4w + gnd, Wye	2
SF80-240DCT	240/120/120 VAC	3 ph, 4w + gnd, High-leg Delta	3
SF80-277Y	277/480 VAC	3 ph, 4w + gnd, Wye	2
SF80-240D	240 VAC	3 ph, 3w + gnd, Delta	4
SF80-480D	480 VAC	3 ph, 3w + gnd, Delta	4

### 2. Disconnect Power before Installation.

All wiring to be done in accordance with National Electric Code and local codes by qualified electricians.

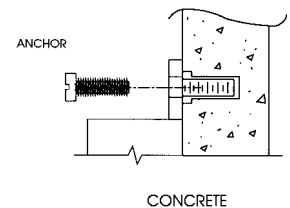
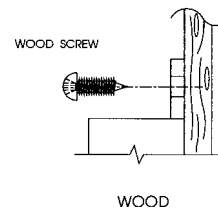
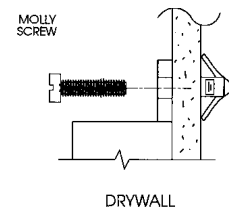
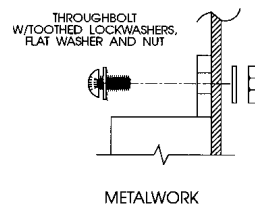
### 3. Mounting.

**For best performance, mount protector as close to service panel as possible.** Secure unit to mounting surface. Use proper fasteners as indicated. (Fasteners not supplied.)

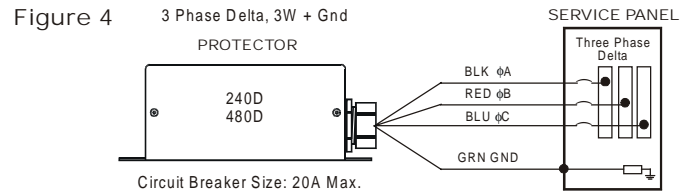
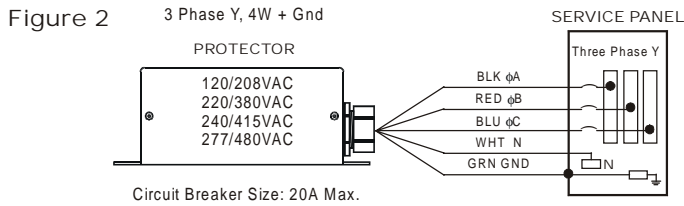
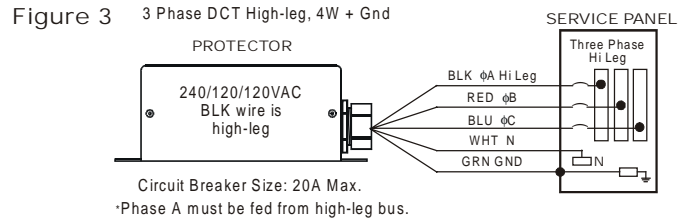
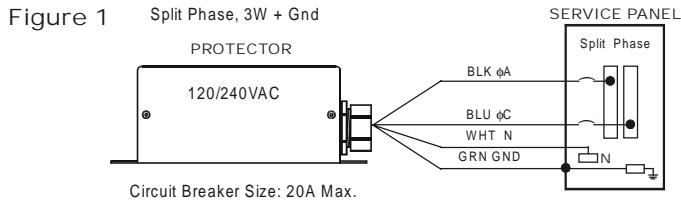
### 4. Wiring.

Surge protector is factory supplied with power cable installed. Cut back power cable as short as possible for best performance.

**Electrician Note:** connect cable to service panel as shown. Refer to wiring diagrams 1-4.



## 4A. Wiring Diagrams.



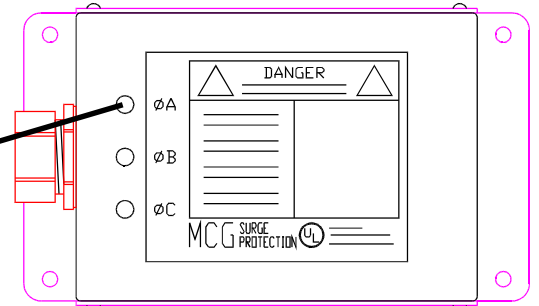
## 5. Diagnostics & Troubleshooting

Green LED ON      Protection Present  
Green LED OFF      Protection Reduced - Replace Protector

When a green "protection present" light is extinguished:

Green On= Protection Present

- Do NOT open or remove power cover. There are NO field serviceable parts inside.
- Contact factory for repair or replacement at 1-800-851-1508.



## Mounting Specifications

For any questions or comments regarding installation of this or any of our protectors,

Please call us at:  
1-800-851-1508

Fax us at:  
516-586-5120

Or write us at:  
MCG Electronics, Inc.  
12 Burt Drive  
Deer Park, New York 11729

